



**Mary T. Ronan Elementary School**  
 Crowninshield Corporation

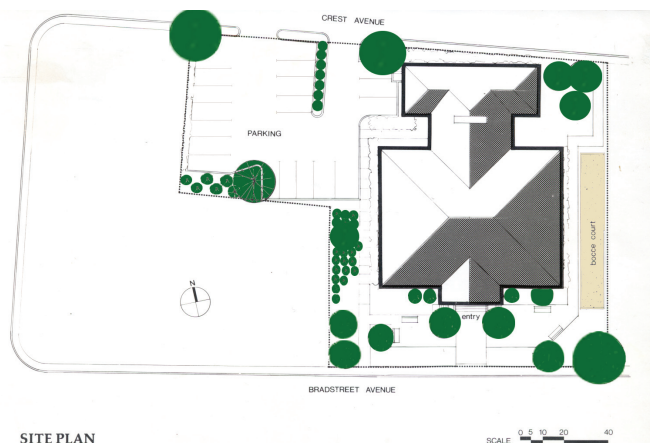
**Summary Scope of Work:**

Jones Payne was retained to provide architectural services for the original conversion of the former Mary T. Ronan Elementary School into 20 units of elderly housing, back in 1981. More recently, Jones Payne completed an extensive window replacement project for the building, which is listed on the National Register of Historic Places. As such, the Ronan School has been rehabilitated to meet the Department of Interior Standards. Therefore, Jones Payne staff had to conduct a Section 106 review with the Massachusetts Historic Preservation Office for approval of product selection, configuration, and finishes. The sound attenuation project has maintained the structure's Part 2 Certification status.

Building Area: 24,000 sq. ft

Construction Cost: \$81,300

Construction Completion: December 2000



SITE PLAN

For more information please contact Eric Raboin in our Boston Office at (617) 790-3747 or email him at [eraboin@jonespayne.com](mailto:eraboin@jonespayne.com).