



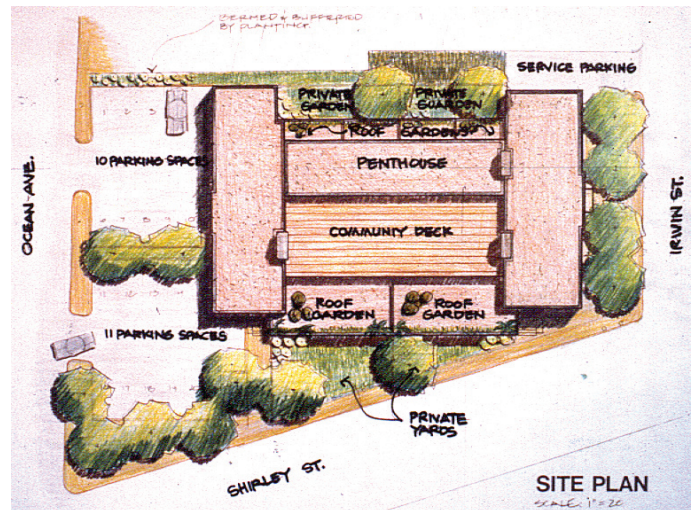
Chase School Condominiums

Crowninshield Corporation

Summary Scope of Work:

Jones Payne served as the Architect and Construction Inspector for the adaptive use of the former Chase Elementary School, which was converted into 17 residential condominium units. The project involved the substantial rehabilitation of the building, new mechanical and electrical systems, as well as the replacement of exterior windows and doors. Many of the units are two-story townhouses with a bedroom level above the living/dining spaces. Where possible, key historical building elements were highlighted or retained to add to the character and charm of the units and common areas.

Building Area: 30,464 sq. ft
 Project Completion: October 1998
 Construction Cost: \$1,600,000



For more information please contact Eric Raboin in our Boston Office at (617) 790-3747 or email him at eraboin@jonespayne.com.