

# As-Built Retriever Web-Based As-Built Spatial Search Engine

City of Colton, CA

## profile

2001 - Present

### Summary Scope of Work:

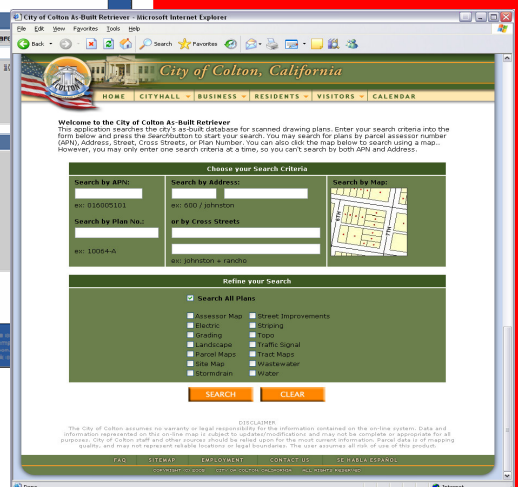
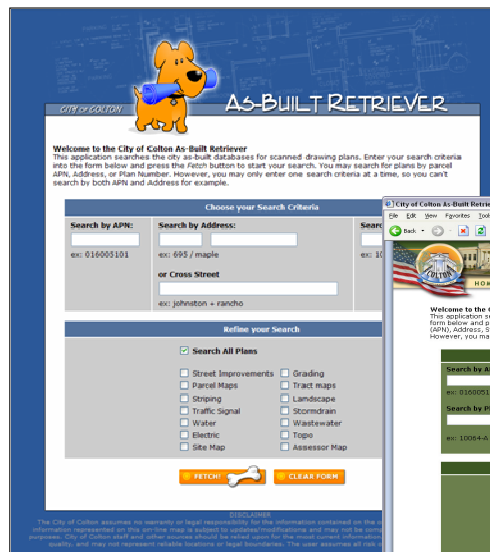
The Jones Payne Group GIS Team has served as the City of Colton's enterprise GIS consultant since 2000. They continue to provide on-call services to support the City of Colton in implementing enterprise-wide GIS applications and integrating the City's ArcSDE databases and GIS applications with other city management systems. A recent project included the development of an ArcIMS based spatial search engine for displaying scanned as-built drawings and other property-related documents. The system, named "the As-Built Retriever" is used daily by many city engineering and other staff who need access to city infrastructure documents.

### Services Include:

- Design and programming of As-Built drawing search engine using ArcIMS and ASP.Net.
- Implementation of SQL Server database to store as-built drawing metadata
- Consultation on project design and requirements

### Technology Implemented:

- ArcIMS 9.1
- ArcSDE 9.1
- SQL Server 2000 and 2005
- ASP.Net 1.1



**Company Name:**  
City of Colton

**Contact Person**  
Phillip Hinojos

**Title:**  
GIS Coordinator

**Phone Number:**  
(909) 514-4224

**Address:**  
650 N. La Cadena, Dr.  
Colton, CA 92324